

STATE OF ARKANSAS  
STATE HIGHWAY DEPARTMENT

FISCAL YEAR	Job No.	SHEET NO.	TOTAL SHEETS
1928	1005	1	5
Proj. Nos. HARRISBURG, W. RO. RT14 DR. 727			

PLAN OF PROPOSED BRIDGES  
ON

HARRISBURG WEST ROAD

POINSETT COUNTY

ROUTE 14 SEC. 13

JOB NO. 1005

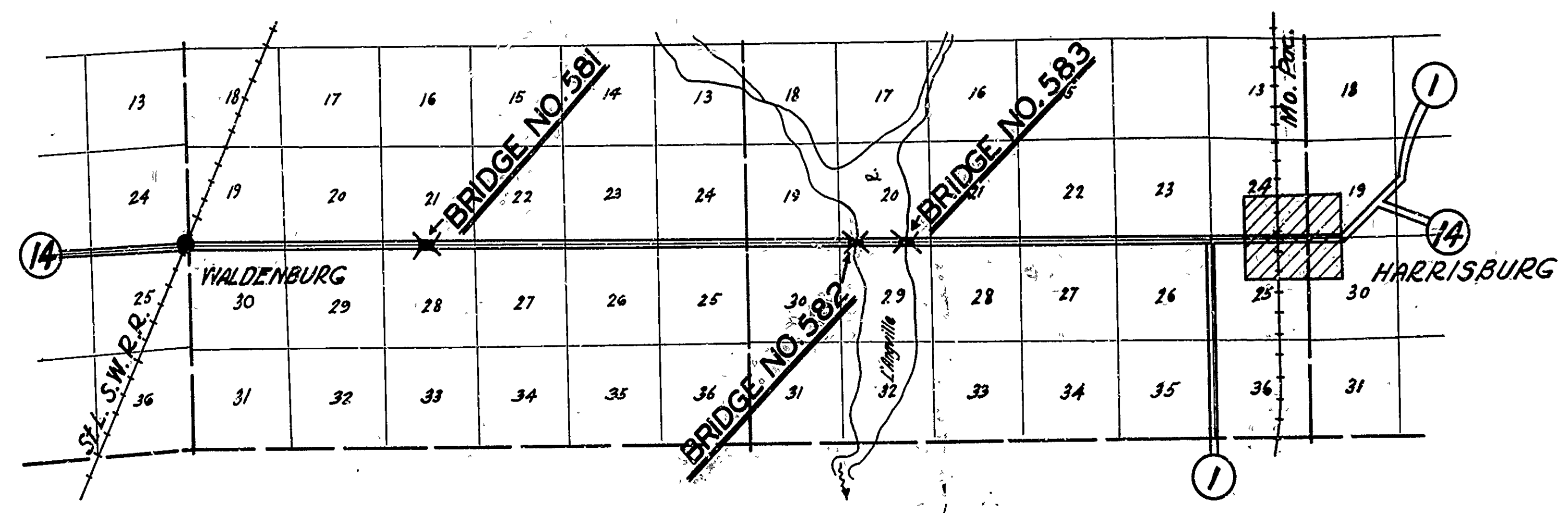
FEDERAL AID PROJECT No.

INDEX OF SHEETS

Sheet No.	Dwg. No.	Description
1	727	Title Sheet
2	728	Layout of Bridges 581 & 582
3	730	Layout Bridge 583
4	731	Details of Abutment 583
5	93	80'-0" Steel Span Bridge 583
6	16	19'-0" Span 19'-0" Rwy. Std. T.T. Br

QUANTITIES

Item No.	Description	Quantity	Unit
12	Earth Excavation	2983	Cu. Yds.
13	Dry " for Structures	459	" "
13	Wet " " "	638	" "
54	Class "A" Concrete	306.60	" "
54	" " " " "	53.40	" "
55	Reinforcing Bars	40,617	Lbs.
56	Structural Steel in Trusses	61,600	" "
66	Untreated Timber Piling	1,760	Lin. Ft.
67	Treated timber Piling	736	" "
52	Untreated Bridge Timber	0.632	M.F.B.M.
52	Treated " " "	18.844	" " "



LAYOUT  
Scale: 1" = 1 Mi.

GROSS LENGTH OF PROJECT 450'-0" = 0.850 Mi.  
NET LENGTH OF PROJECT 450'-0" = 0.850 Mi.

APPROVED: \_\_\_\_\_  
COMMISSIONER STATE LANDS, HIGHWAYS AND IMPROVEMENTS

APPROVED: \_\_\_\_\_  
STATE HIGHWAY ENGINEER

RECOMMENDED FOR APPROVAL: \_\_\_\_\_  
DISTRICT ENGINEER - U.S. BUREAU OF PUBLIC ROADS

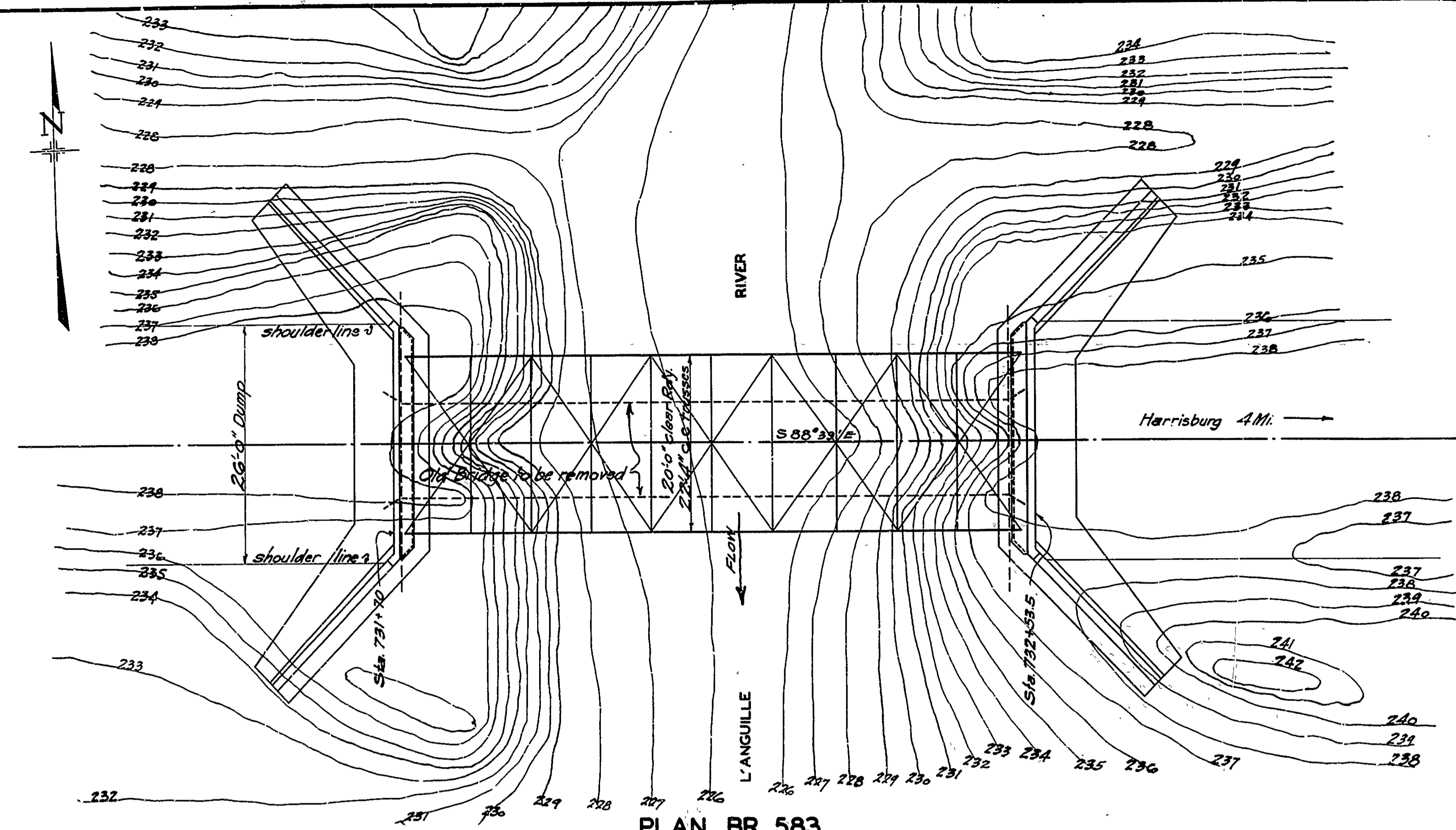
RECOMMENDED FOR APPROVAL: \_\_\_\_\_  
DISTRICT ENGINEER - U.S. BUREAU OF PUBLIC ROADS

APPROVED: \_\_\_\_\_  
DIRECTOR U.S. BUREAU OF PUBLIC ROADS

M. B. Sawyer  
BRIDGE ENGINEER

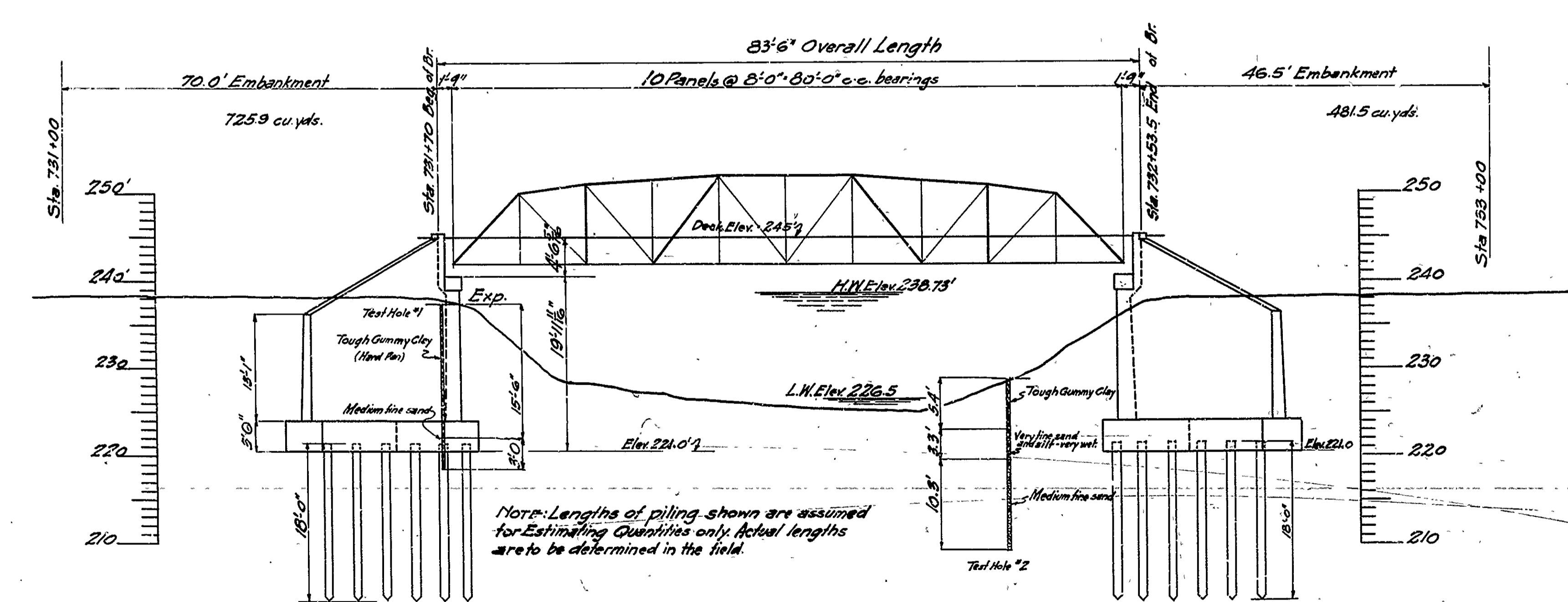
BRIDGES NO. 581, 582, 583 DRAWING NO. 727

FED. ROAD DIST. NO.	STATE	FED. AID PROJ. NO.	FISCAL YEAR	SHEET NO.	TOTAL SHEETS
6	ARK.	196-A	1928	85	92
BRIDGE OVER L'ANGUILLE R. POINSETT CO. BR# 730					



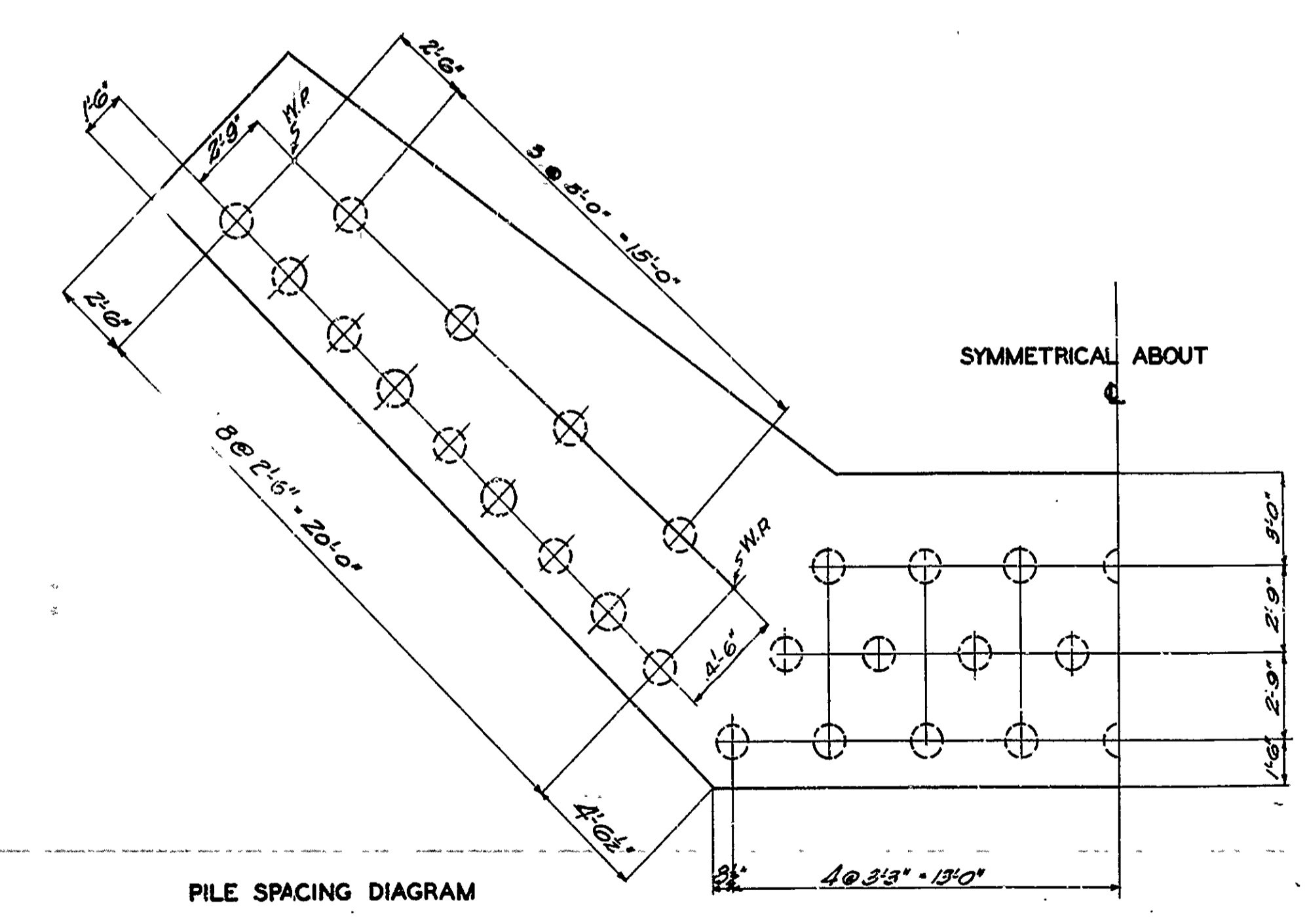
**-QUANTITIES-**

ITEM 12	EARTH EXCAVATION	1207. CU.YDS.
" 13	DRY EXCAVATION - STRUCTURES	459. " "
" 13	WET EXCAV. "	638. " "
" 54	CLASS "A" CONCRETE	306.6 " "
" 54	CLASS "S" CONCRETE	53.4 " "
" 55	REINFORCING STEEL	40617 LBS.
" 56	STRUCTURAL STEEL IN TRUSSES	61600 LBS.
" 66	UNTREATED TIMBER PILING	1760 LIN.FT.



**ELEVATION BR. NO. 583**  
SCALE 1" = 10'  
For Details see Drwg. Nos 93 & 731

D.M. - Nail in base of 24" Willow Oak.  
Opp Sta. 732+76 - N75'  
Elev. 237.33

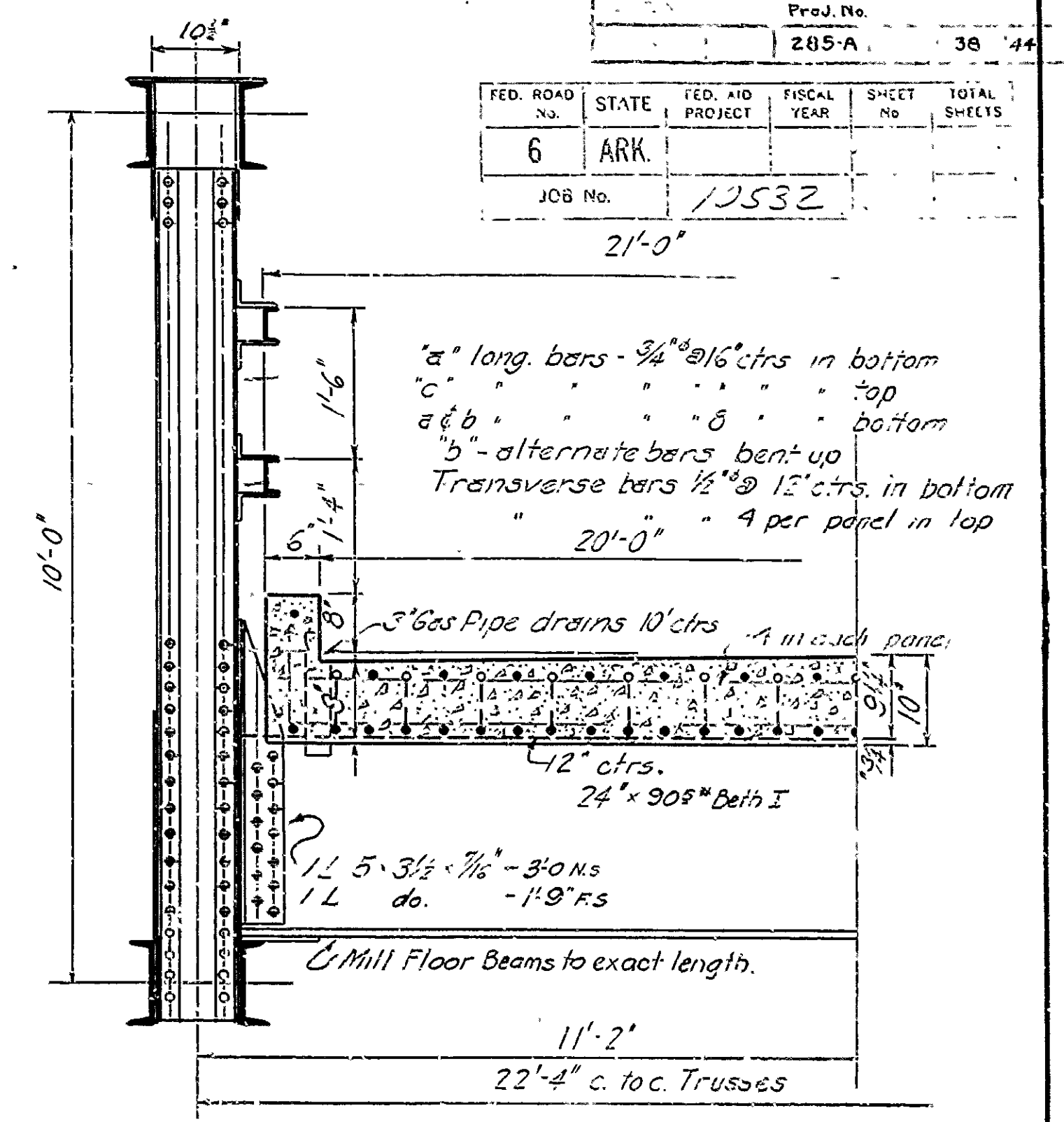
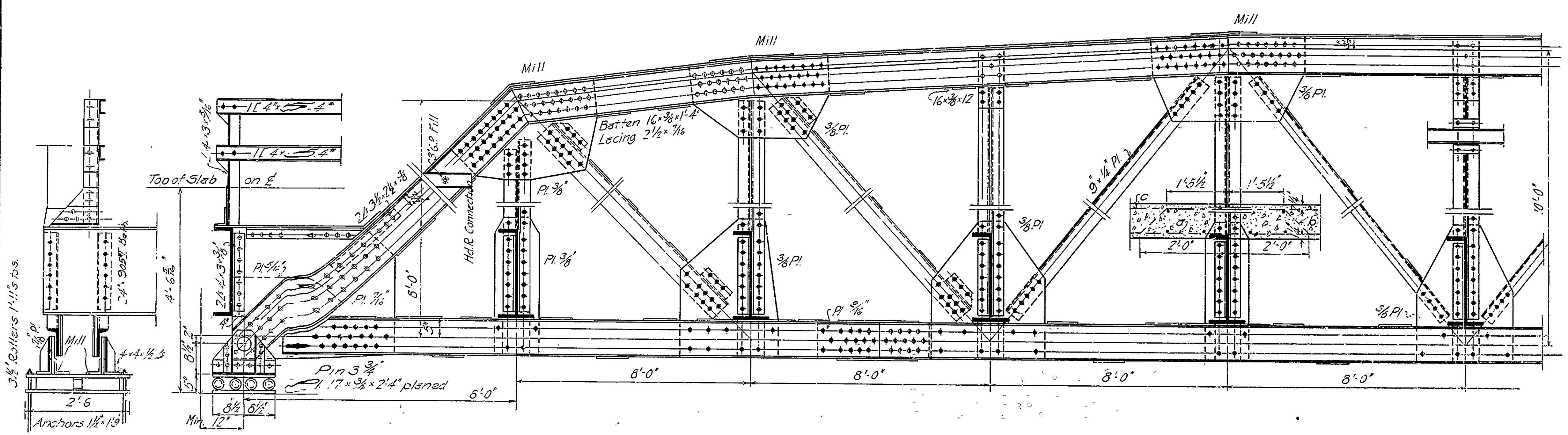


**LAYOUT OF**  
BRIDGE OVER L'ANGUILLE RIVER  
4 MI. WEST OF HARRISBURG  
POINSETT COUNTY

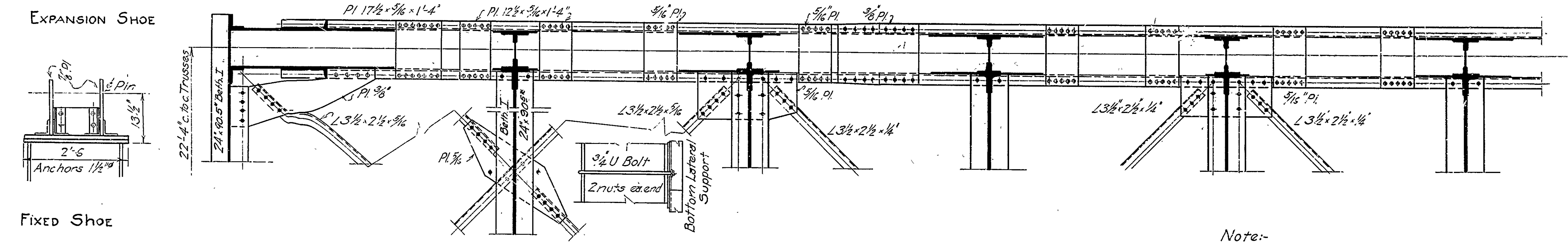
ROUTE 14 SEC. 13  
**ARKANSAS STATE HIGHWAY DEPARTMENT**  
LITTLE ROCK, ARK.  
Drawn By: M.L. Date: 1/22/28  
Traced By: M.L. Date: 1/22/28  
Checked By: M.L. Date: 1/22/28  
Scale: 1 in. = 10 ft.  
BRIDGE NO. 583 DRAWING NO. 730

M.L. Jones  
BRIDGE ENGINEER

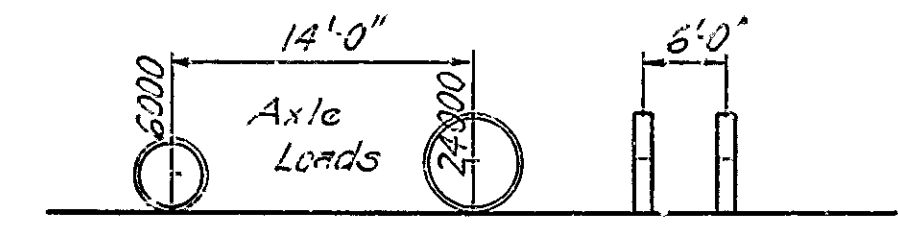
80' STEEL HWY. TRUSS 25' Rdw. DR #73					
E.F. AID					
Prod. No. 285-A					
38 44					
FED. ROAD No.	STATE	FED. AID PROJECT	FISCAL YEAR	SHEET No.	TOTAL SHEETS
6	ARK				
JOB No. 10532					



PARTIAL SECTION

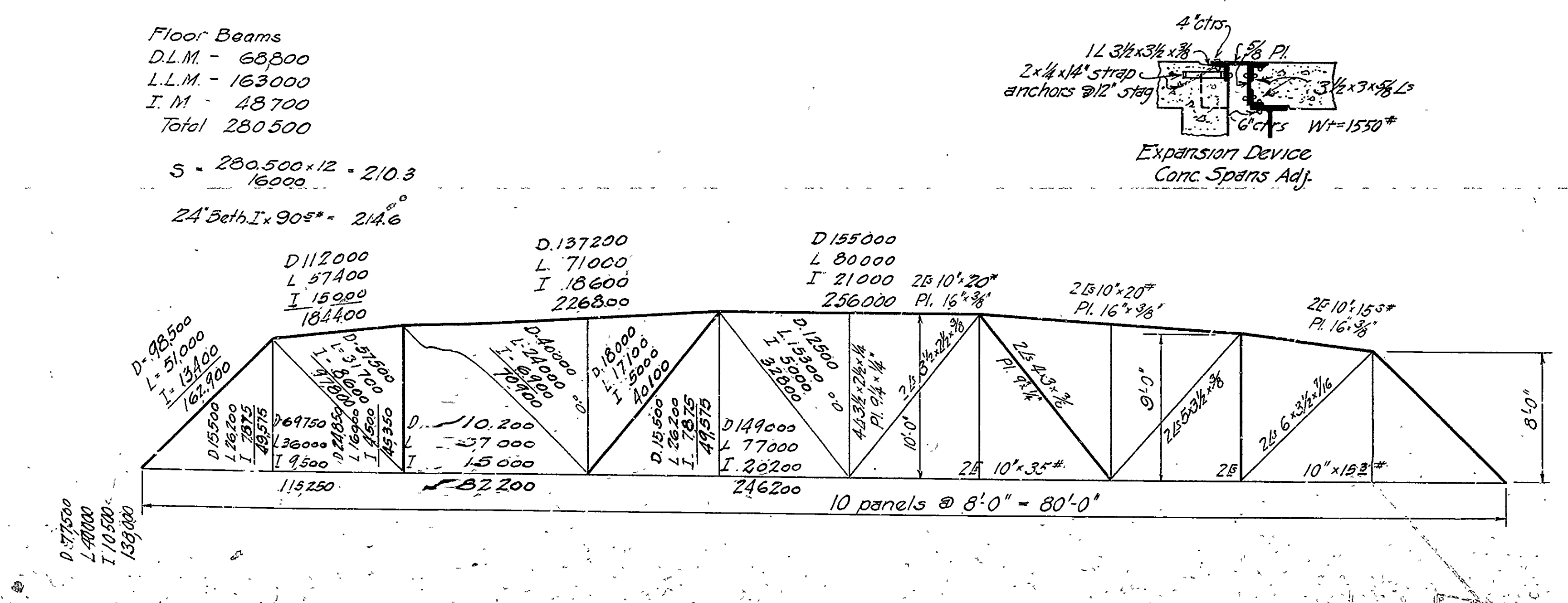


SPECIFICATIONS



LIVE LOAD:- Uniform-100lbs per sq. ft. of Roadway  
 Concentrated- 2-15Ton Trucks as shown  
 Impact = 100/17500  
 Unit Stresses:- See Ark. Highway Dept. Specif. 7/30/35  
 Rivets:- 3/8" diameter  
 Open Holes:- Rivet holes in main members punch 3/16" smaller than rivet. During shop assembly room to 1/16" larger than rivet specified  
 All field connections riveted. Rivet holes in tension members so spaced that only one hole is deducted from each angle at point of maximum stress. Deduct two holes in each channel  
 Shop Paint:- One coat red lead & raw linseed oil.  
 Field Paint:- Two coats of different colors as approved  
 Batten Plates:- Spaced not over 3'-0" centers on tension members  
 Concrete: Floor slab Class 5" Extra 1" was added for wear

Note:-  
 This drawing is general. Shop drawings must be submitted and approved before fabrication is begun.



This drawing included in Job No. 10532 for general information only.

STANDARD PLAN  
 80'-0" STEEL HIGHWAY TRUSS  
 20'-0" Roadway Concrete Floor

N.B. Garner  
 Bridge Engineer

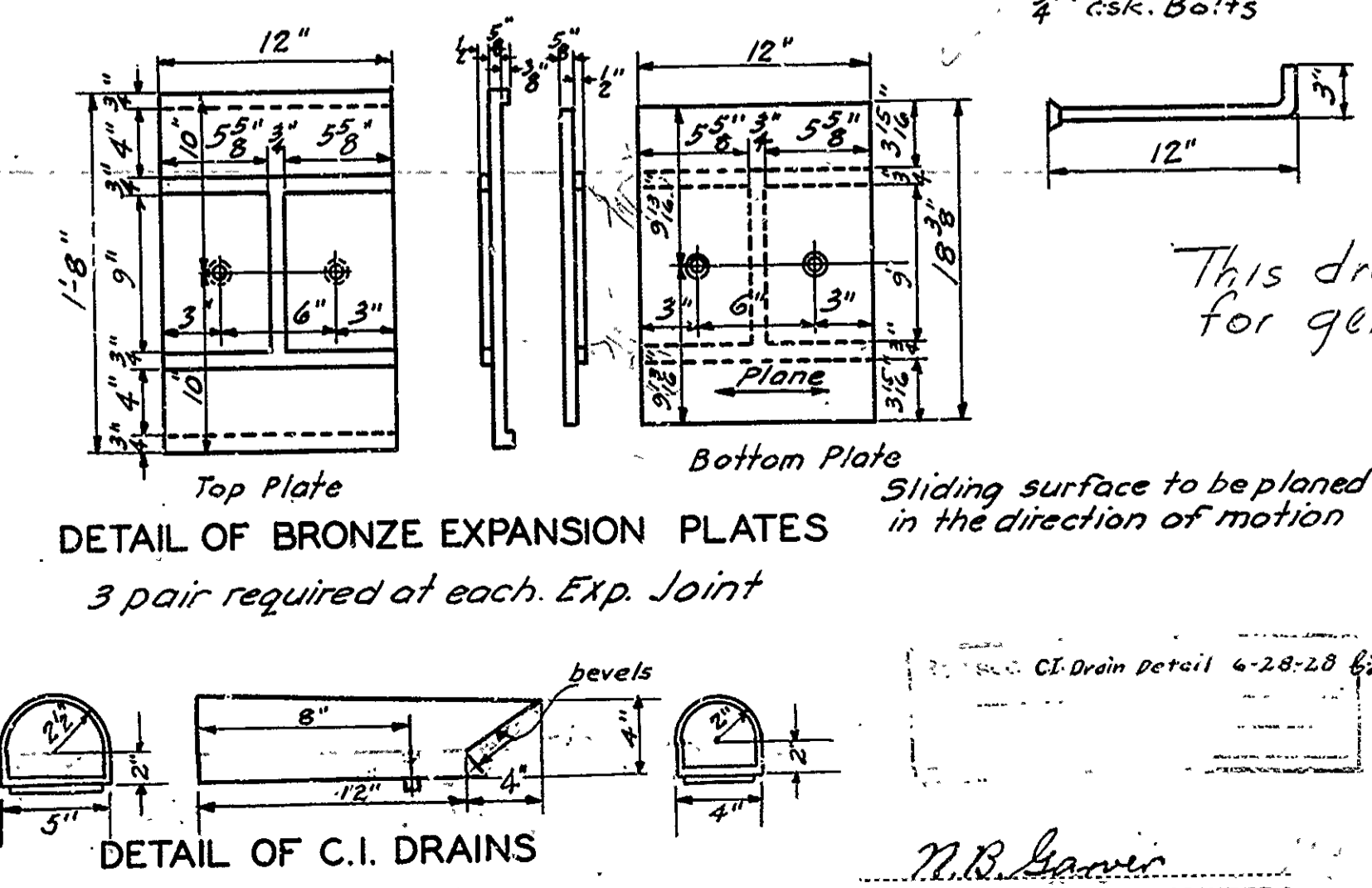
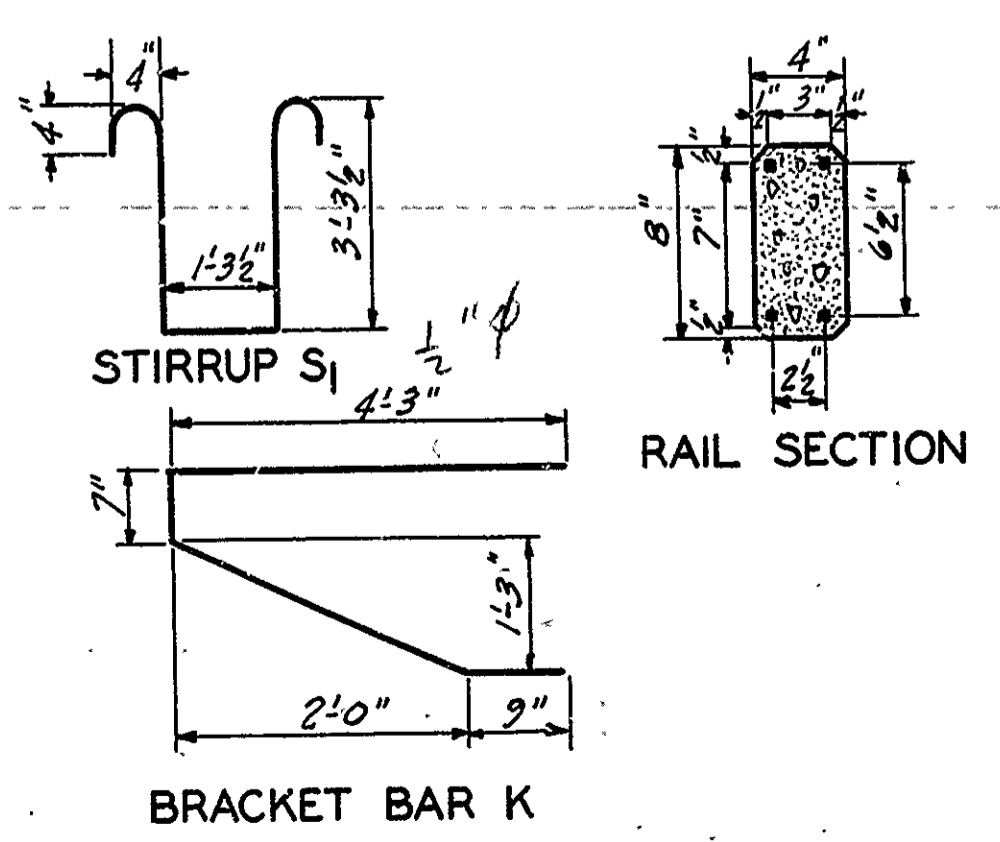
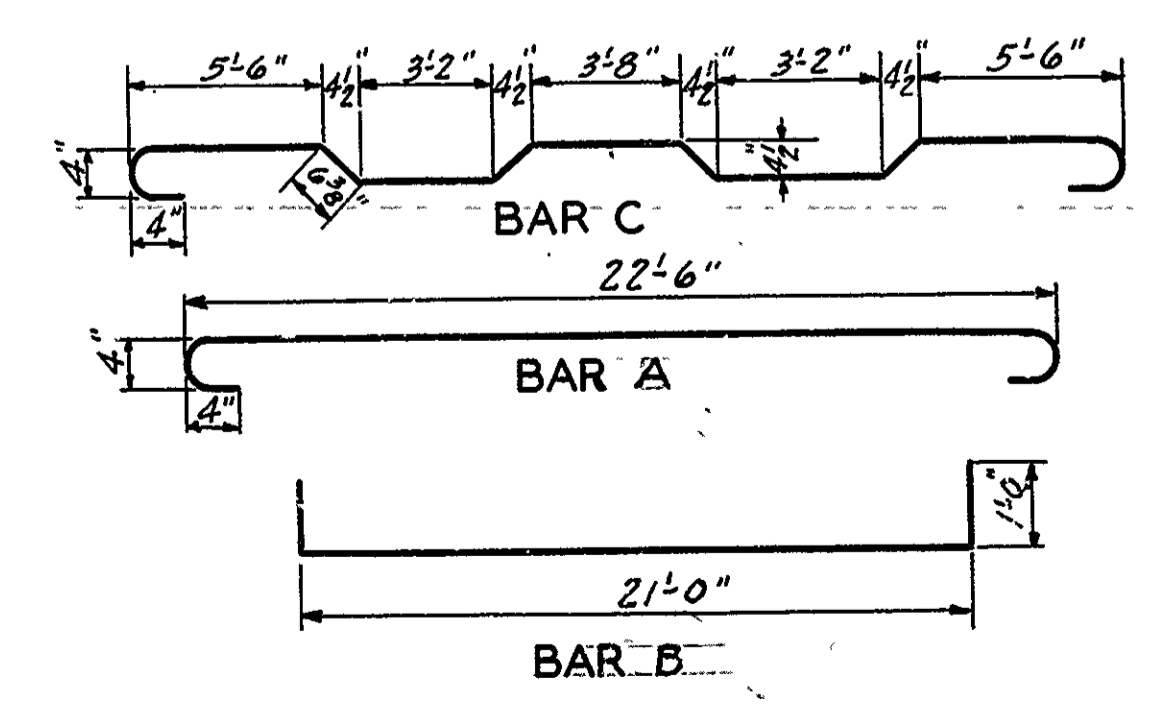
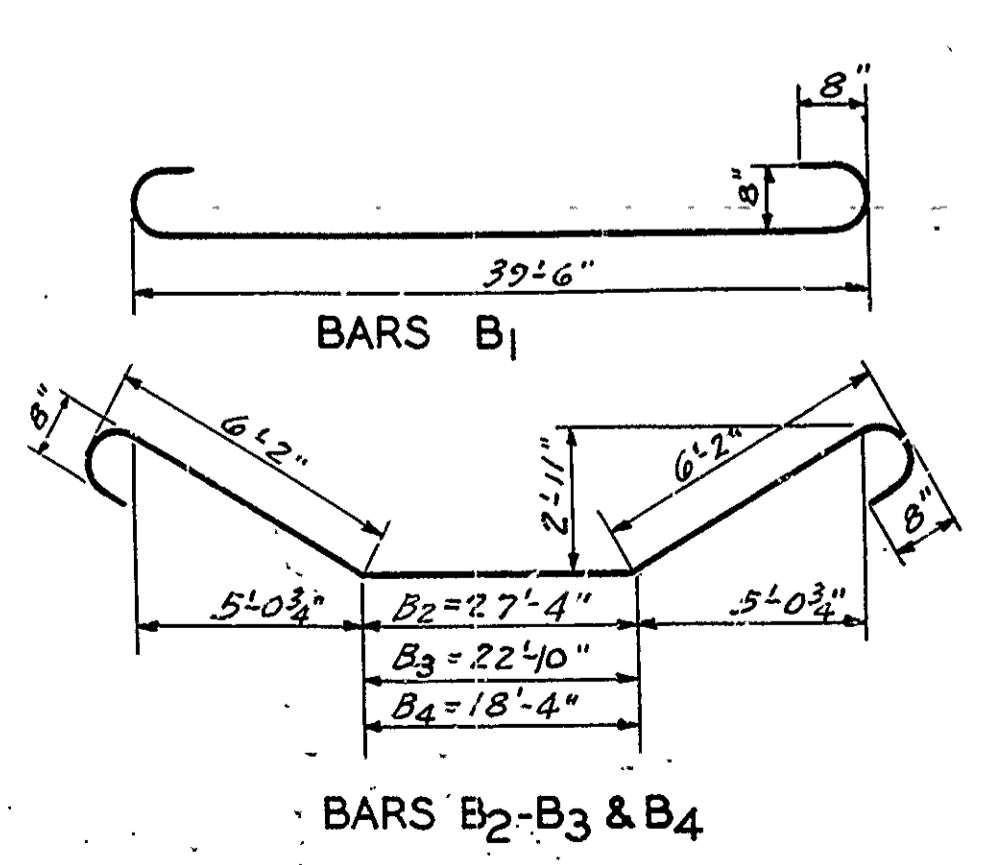
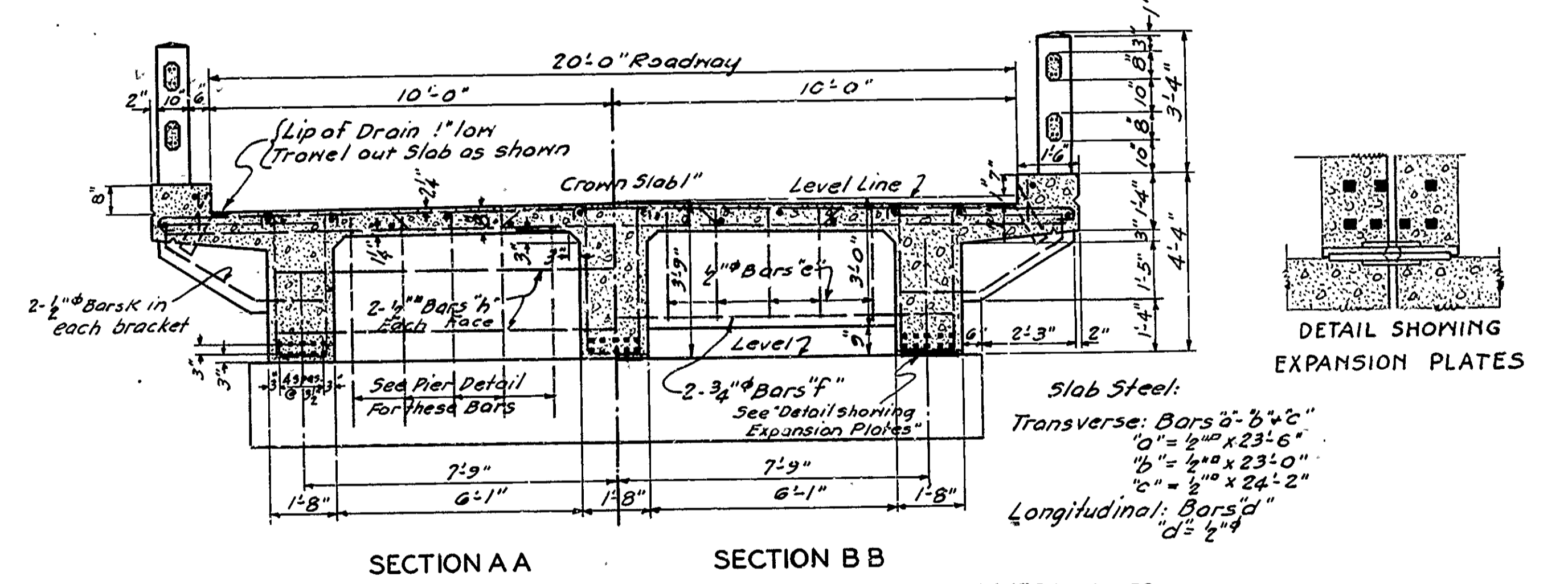
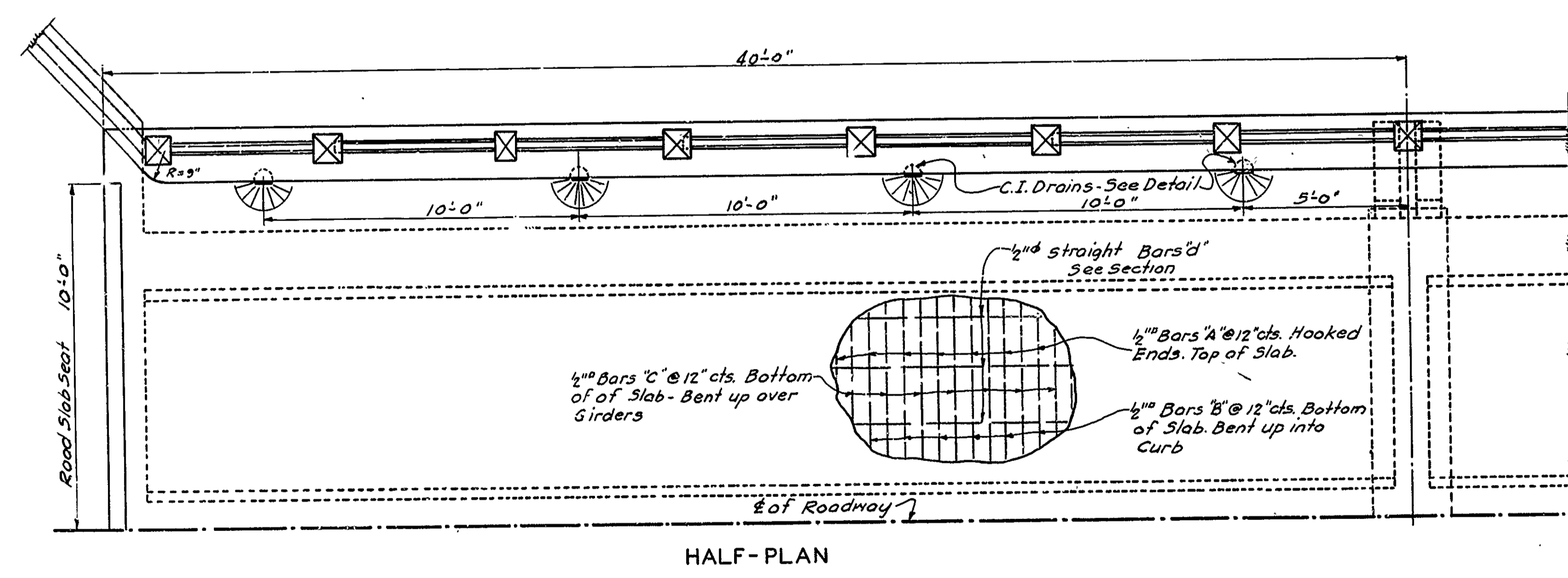
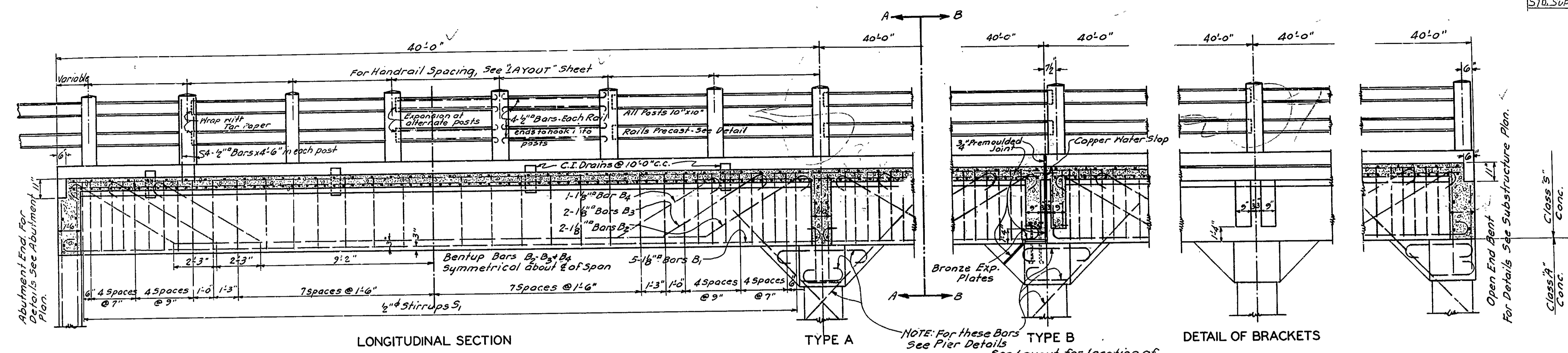
QUANTITIES  
 Struct Steel 70,603# Shop Wt  
 Rein. Steel 7905#  
 Conc. 5" (81'6") 53 1/2 cu yds.

Revised	APP No. 5-10-32 84K
Sta. Nos.	

ARKANSAS HIGHWAY DEPARTMENT  
 LITTLE ROCK, ARK.

Designed By \_\_\_\_\_ Date \_\_\_\_\_  
 Traced By \_\_\_\_\_ Date \_\_\_\_\_  
 Checked By \_\_\_\_\_ Date \_\_\_\_\_

FISCAL YEAR	10 476	SHEET TOTAL SHEETS	57 137
STD. SUBST. 40' R.C.D. GIRDER 20' ROADWAY, DR. 11			



**GENERAL NOTES:**  
 All exposed corners to have 3/4" chamfer unless otherwise noted.  
 Precast Concrete Handrails to be 1:3 Mix. Maximum aggregate 3/4".  
 Rail Posts to be Class "3" Concrete.  
 Reinforcing Steel to be deformed bars of Structural or Intermediate grade. Shop list and Bending Diagrams of Steel must be submitted before fabrication. Drains and Exp. Devices to be paid for at the unit price bid for Reinforcing Steel.  
 All Concrete above top of Column cap except Handrail, Class "3"; below, Class "A".  
 Specifications: Arkansas Standard Road and Bridge Specifications, adopted May 30, 1925.  
 All Concrete to be poured in the dry.

This drawing included in Job No. 10476 for general information only.

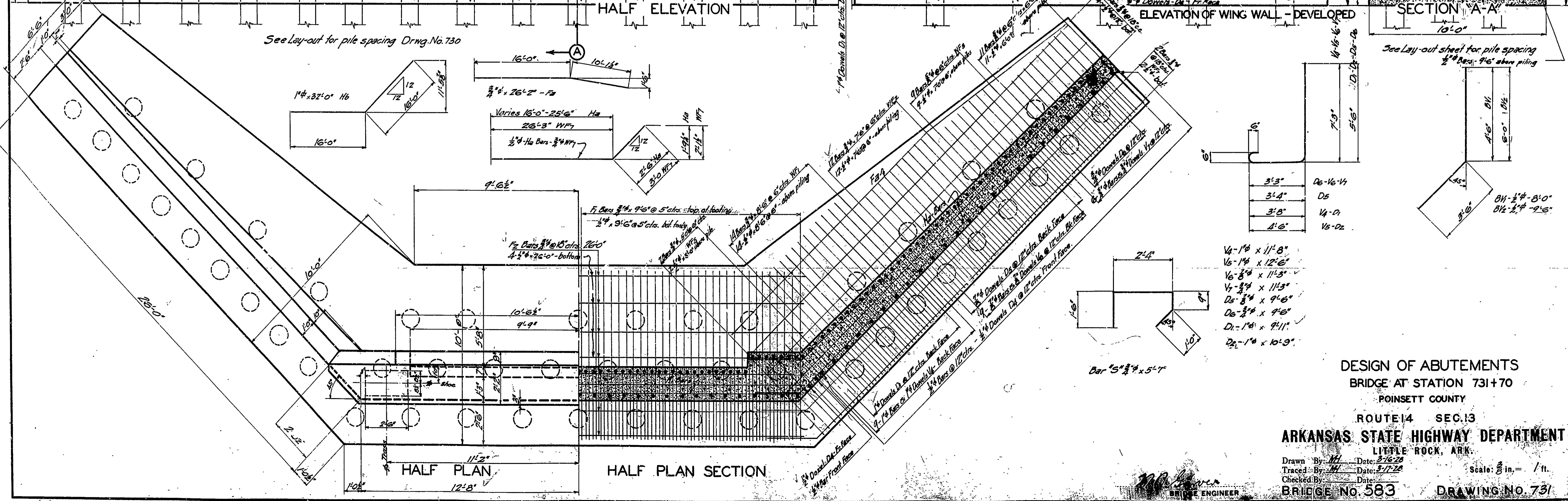
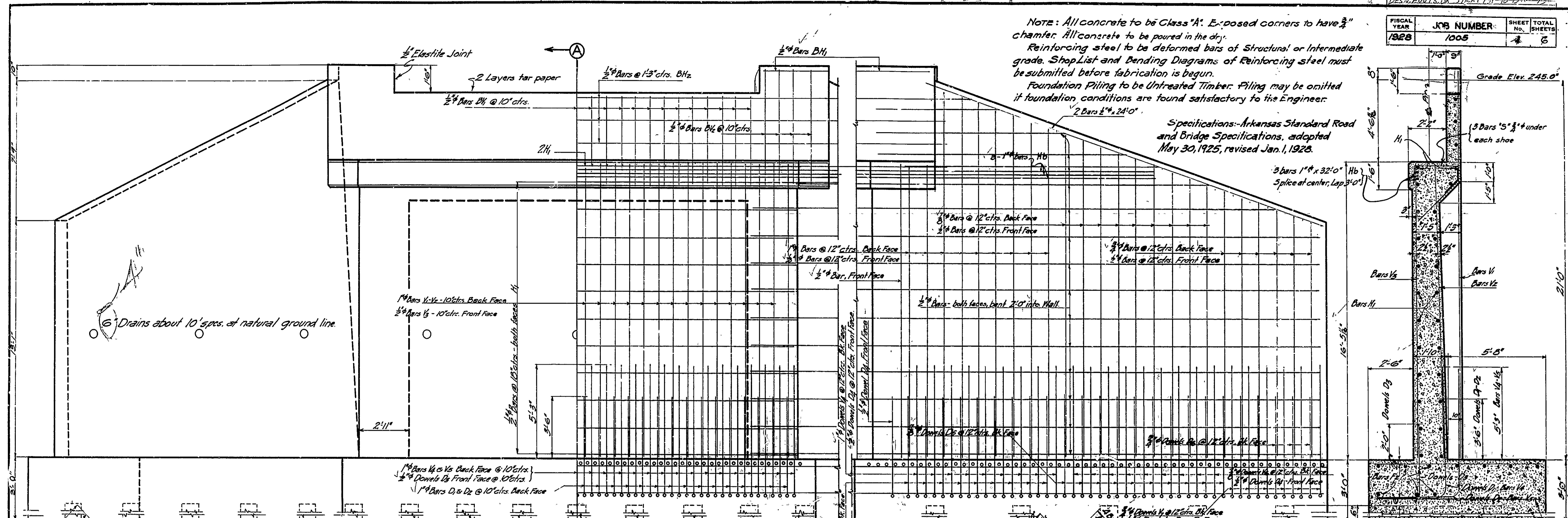
**STANDARD SUPERSTRUCTURE**  
 FOR  
**40' R.C.D. GIRDER**  
**20' ROADWAY**

ROUTE SEC.  
**ARKANSAS STATE HIGHWAY DEPARTMENT**  
 LITTLE ROCK, ARK.  
 Drawn By: *A.M.G.* Date: *3-2-28*  
 Traced By: *A.M.G.* Date: *3-10-28*  
 Checked By: \_\_\_\_\_ Date: \_\_\_\_\_  
 BRIDGE NO. \_\_\_\_\_  
 Scale: 3/8" = 1 ft.  
**DRAWING NO. 181**

*N.B. Harris*  
 BRIDGE ENGINEER

NOTE: All concrete to be Class "A". Exposed corners to have  $\frac{3}{4}$ " chamfer. All concrete to be poured in the dry.  
 Reinforcing steel to be deformed bars of Structural or Intermediate grade. Shop List and Bending Diagrams of Reinforcing steel must be submitted before fabrication is begun.  
 Foundation Piling to be Untreated Timber. Piling may be omitted if foundation conditions are found satisfactory to the Engineer.

Specifications: Arkansas Standard Road and Bridge Specifications, adopted May 30, 1925, revised Jan. 1, 1928.



See Lay-out for pile spacing Drwg. No. 730

3'-3"	D6-16-14
3'-4"	D5
3'-5"	V4-D1
4'-6"	V5-D2

- V4-1'6" x 11'8"
- V6-1'4" x 12'6"
- V6-8'4" x 11'3"
- V7-3'4" x 11'3"
- D5-3'4" x 9'6"
- D6-3'4" x 9'6"
- D1-1'4" x 9'11"
- D2-1'4" x 10'9"

DESIGN OF ABUTEMENTS  
 BRIDGE AT STATION 731+70  
 POINSETT COUNTY  
 ROUTE 14 SEC. 13  
 ARKANSAS STATE HIGHWAY DEPARTMENT  
 LITTLE ROCK, ARK.

Drawn By: *ML* Date: 3-16-28  
 Traced By: *ML* Date: 3-17-28  
 Checked By: *ML* Date: *ML*

Scale:  $\frac{3}{8}$  in. = 1 ft.  
 BRIDGE NO. 583 DRAWING NO. 731